



Library Locations:

- ▶ Lillington (Harnett)
- ▶ Pittsboro (Chatham)
- ▶ Sanford (Lee)

# Basics



## Hours

Mon. – Thurs.

7:30 AM to 9:00 PM (Sanford)

7:30 AM to 8:00 PM (Lillington & Pittsboro)

Fri. – 7:30 AM to 3:30 PM

All libraries are closed on Saturday and Sunday and other college closings. Hours may vary during Breaks. Please check the library webpage for changes.

## Contact

Phone 910-814-8843 (Lillington Library)

Numbers : 919-542-6495, Ext.. 216 (Pittsboro Library)

919-718-7244 (Sanford Library)

Web Address: [www.cccc.edu/library](http://www.cccc.edu/library)

# Library Card – Necessary

Students use ID as Library Card.

First card – free. Replacement – \$5.00

Community patrons issued a card. Replacement – \$2.00



A valid library card is required to:

- ▶ Check out books, magazines, reserves
- ▶ Check out videos, cds, and tapes
- ▶ Check out AV equipment

# Libraries are for:



## ▶ Research

- Reference
- Book collection
- Journal collection
- Online Databases



## ▶ Assignments

- Type Papers
- Use Blackboard
- Create Presentations
- Use Computer Lab

# Libraries are for:



## ▶ Study

- Study Carrels
- Study Rooms
- Media Review Areas



## ▶ Recreation

- Check e-mail
- Play board games
- Read magazines
- Surf the Net

# Checking It Out

Books, Audio-  
books,  
CDs

- 3 Weeks
- 1 Renewal

Periodical  
Back Issues

- 1 Week

Movies  
Videos,  
DVDs

- 3 Days
- 2 Title  
Limit



Reference  
Resources:  
Overnight

# A Library Without Walls

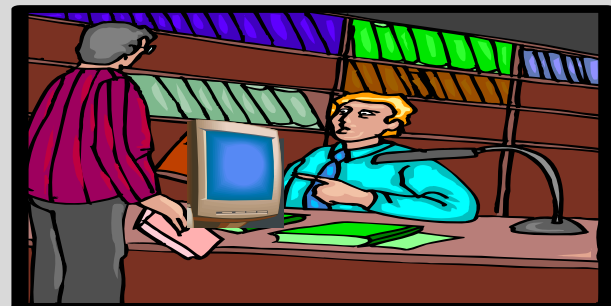
## Interlibrary Loan Service

- Books and Photocopied Articles (usually free)
- From Libraries Nationwide  
(Reference or Media Materials may not be available for loan)



## Reference Services - 24/7

- Ask A Librarian (e-mail a librarian at your convenience)
- NCKnows (live chat)
- Library Instruction for individuals and classes



# Locating Materials

## ▶ Books

- General Collection
- Special Collections
- Reference Books interfiled in the General Collection
- Law Library

## ▶ Library of Congress

(Used to classify and shelve books)



## ▶ Articles from Databases

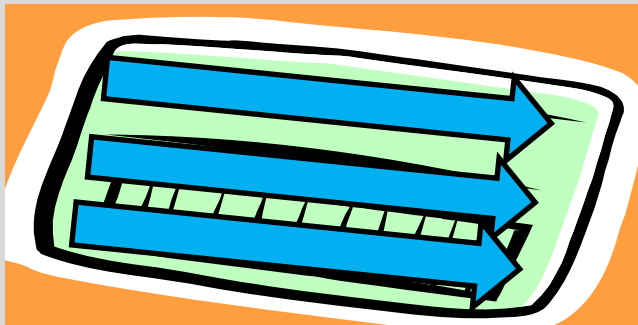
- JSTOR
- Literature Resource Center
- NC LIVE
- Opposing Viewpoint Resource Center
- Oxford English Dictionary
- Westlaw
- Wilson OmniFile

(Ask the librarian for passwords for off campus access to some of the databases)

# Tech Tidbits

## Copy Cards Necessary

- For Printing and Copies
- Purchase and Replacement Cost - \$ 1.00
- Purchase in the Library
- Takes \$1, \$5, and \$10 Bills



## Wireless Internet Available

- Ask Librarian for SSID
- Sanford Campus  
Bell, Hockaday, Science, Library, and Joyner Buildings
- Lillington Campus  
Etheridge and Miriello Buildings
- Pittsboro Campus  
Both Buildings

Librarians, the Best Library Resource Available.



Always feel free to ask for assistance.