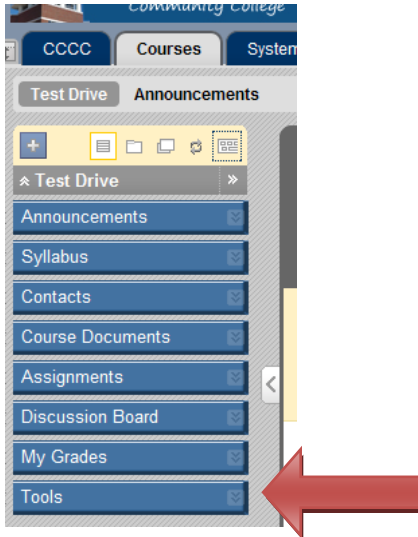


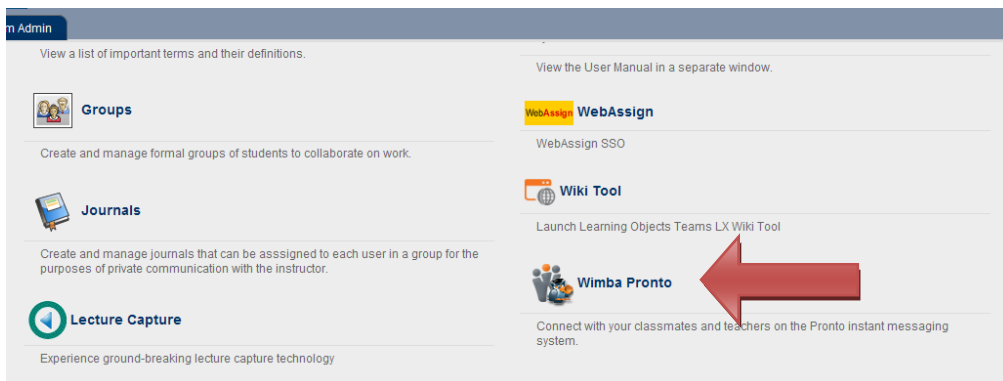
# Wimba Pronto Setup for Students

## Download and Install Wimba Pronto

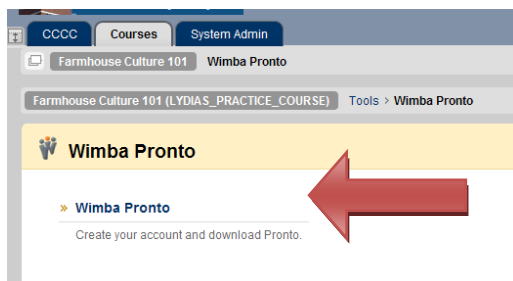
1. Click the **Tools** link that is listed on your Course Menu.



2. Click the **Wimba Pronto** link above the text, "Connect with your classmates and teachers on Pronto instant messaging system."



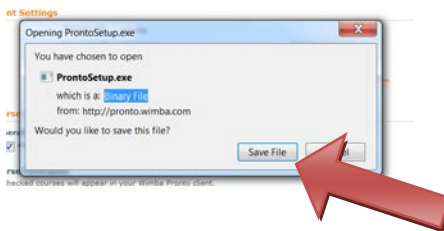
3. Click the **Wimba Pronto** link above the text, "Create your account and download Pronto."



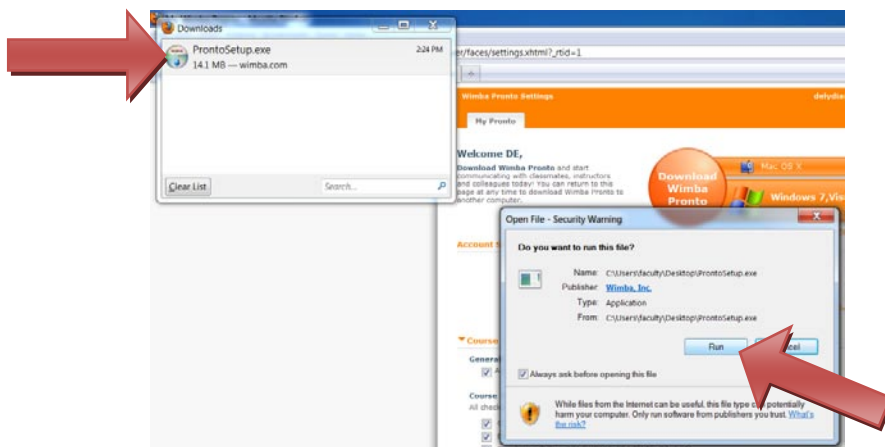
4. A new screen will open with your account settings and a Download option.
5. Click on the name of your operating system to begin the installation process.



6. A welcome screen will appear where you will be prompted to create a Wimba Pronto account. You will need to fill in all of the blank fields and read and accept the terms and conditions before you will be able to proceed with the installation process. Please be sure to choose a Pronto ID and password you can remember or write it down in a safe place.
7. On most computers a window will pop up with the Pronto Setup File. You will need to click the **Save File** button to save this file to your computer.



8. Once the file is saved, click the file name and then the **Run** button in the new pop up window.



9. When the Setup Wizard appears, choose all default options by clicking the **Next** button on each new screen.
10. When you reach the last screen, click **Finish** to complete the installation.
11. You have now completed all the installation steps and are ready to login and begin chatting.